



Fruit matures
in one yr.

Habitat:
Dry upland.



Fruit matures
in one yr.

Habitat:
Dry upland.



Fruit matures
in one yr.

Habitat:
Dry hilltop.



Fruit matures
in 2 years.

Habitat:
Upland.



*Fruit matures
in two yrs.*

*Habitat:
Upland.*



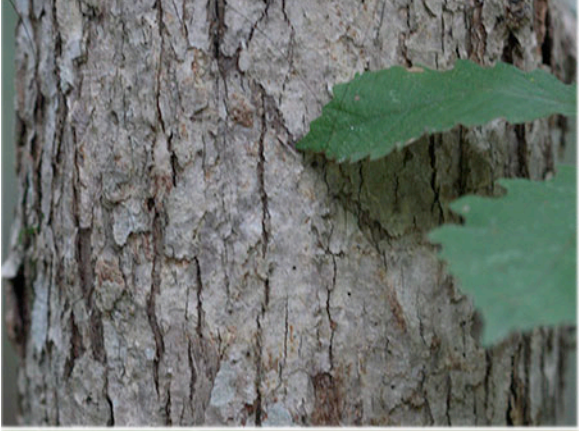
*Fruit matures
in two yrs.*

*Habitat:
Dry woods.*



*Fruit matures
in one year.*

*Habitat:
Floodplain.*



*Fruit matures
in one year.*

*Habitat:
Tall, flood-
plain forest.*



*Fruit matures
in one year.*

*Habitat:
Bottomland.*



*Fruit matures
in 2 years.*

*Habitat:
Floodplain*



Fruit matures
in 2 years.

Habitat:
Bottomland.



Fruit matures
in 2 years.

Habitat:
Bottomland.



*Fruit matures
in one year.*

*Habitat:
Dry upland.*



*Fruit matures
in one year.*

*Habitat:
Upland.*



*Fruit matures
in one year.*

*Habitat:
Rocky hilltop.*