



Fruit matures  
in one yr.

Habitat:  
Upper slope.



Fruit matures  
in one yr.

Habitat:  
Hilltop; rocky.



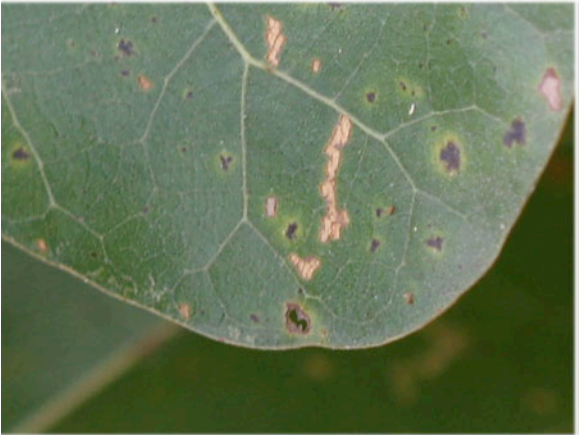
*Fruit matures  
in one year.*

*Habitat:  
Dry slope.*



*Fruit matures  
in two yrs.*

*Habitat:  
Dry upland.*



*Fruit matures  
in two yrs.*

*Habitat:  
Upland.*



*Fruit matures  
in two yrs.*

*Habitat:  
Dry hilltop.*



*Fruit matures  
in one year.*

*Habitat:  
Bottomland.*



*Fruit matures  
in one year.*

*Habitat:  
Floodplain.*





*Fruit matures  
in one year.*

*Habitat:  
Creekside.*



Fruit matures  
in 2 years.

Habitat:  
Floodplain.



*Fruit matures  
in 2 years.*

*Habitat:  
Bottomland.*



Fruit matures  
in two yrs.

Habitat:  
Bottomland.



*Fruit matures  
in one year.*

*Habitat:  
Upper slope.*



*Fruit matures  
in one year.*

*Habitat:  
Upland; dry.*



*Fruit matures  
in one year.*

*Habitat:  
Hilltop.*