



Fruit matures
in one year.

Habitat:
Mid-slope.



*Fruit matures
in one year.*

*Habitat:
Low hill.*



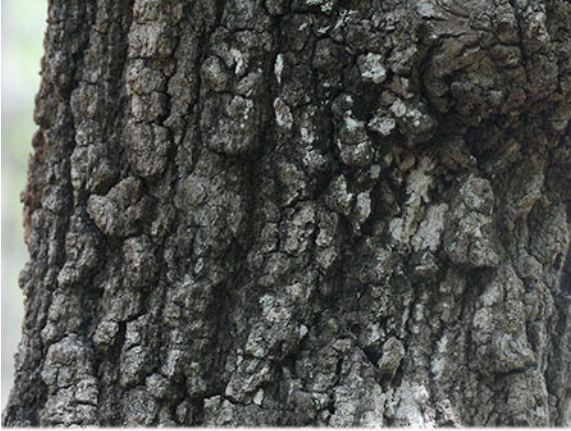
Fruit matures
in one year.

Habitat:
Hilltop.



*Fruit matures
in two years.*

*Habitat:
Uplands.*



*Fruit matures
in two years.*

*Habitat:
Dry woods.*



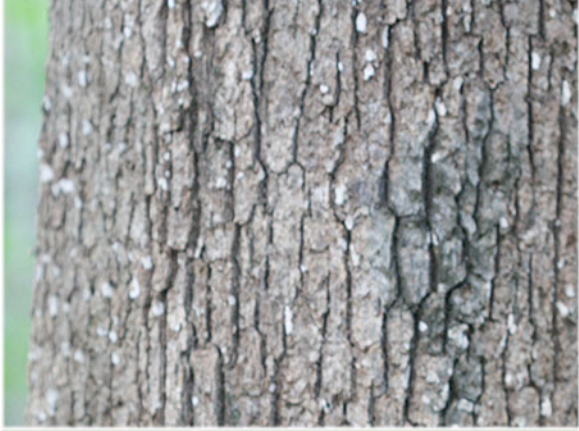
*Fruit matures
in two years.*

*Habitat:
Dry hills.*



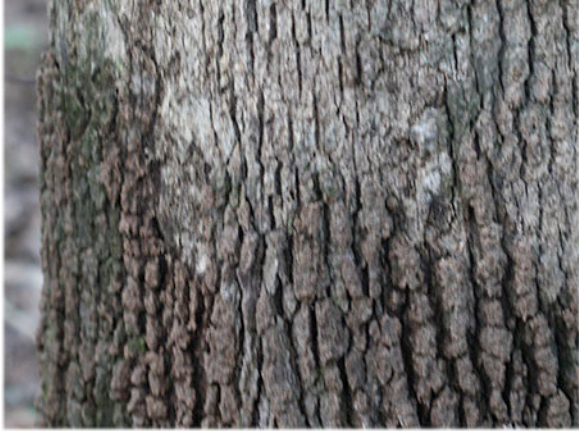
*Fruit matures
in one year.*

*Habitat:
Dry slope.*



*Fruit matures
in one year.*

*Habitat:
Upper slope.*



*Fruit matures
in one year.*

*Habitat:
Rocky slope.*